



# SE Control Sdn Bhd 933364-M

## Company Profile



FOR ALL YOUR  
ELECTRICAL  
NEEDS



FOR ALL YOUR MECHANICAL NEEDS



# ***Our Mission***

To be the most supportive and effective Integration Solution Partner, with “Total Customer Satisfaction”

## ***Brief Introduction Of SE Control Sdn. Bhd***

SE established in 1999 as Industrial Automation Equipment Integrator who is specialize in the assembly of machining parts, Industrial Standard component and automated machineries & equipment.

We started with project of supplied equipment assembly Resource in Malaysia which located at Penang, Kulim Hi-Tech, Bukit Minyak Industrial Park, Penang Science Park and Petaling Jaya Industrial Park. In addition to local services, we also supplied to Oversea such as Singapore, Philippine, Thailand, Korea, Taiwan, Poland, Ireland, India, German, United States and etc.....

Due to go growth in the Industries and our good reputation from customers, SE is growing from 3 to more 100 of qualified well trained service crews with issued share capital of RM1,000,000 and annual revenue of more than 6 million.



# *Quality Policy*

- S ~ Strive for continuous improvement
- E ~ Everyone commits
  
- C ~ Cooperation in coworkers
- O ~ Occupational safety and health
- N ~ Nil complaints
- T ~ To maximize innovation & technology
- R ~ Retain customer satisfaction
- O ~ Objectives for providing best service
- L ~ Leadership challenge



# *Contract Manufacturing*

*SE* is a contract manufacturer offering competitive pricing, quality workmanship, and on-time delivery. We have more than 10 years experience in the industrial and we are ready to serve your needs.

We offer a variety of services and have the flexibility to customize to your production application – regardless of volume, single order or repetitive.

We will work with you on each contract in a quality, timely, and professional manner.



## ***Our Services***

### ***Machine & Equipment Assembly :-***

***Our area of service is continuously growing and currently includes assembly of***

- Semiconductor Equipment
- Precision Equipment
- Heavy Duty Machine and etc....

## ***Engineering Service***

### ***We specialize in :-***

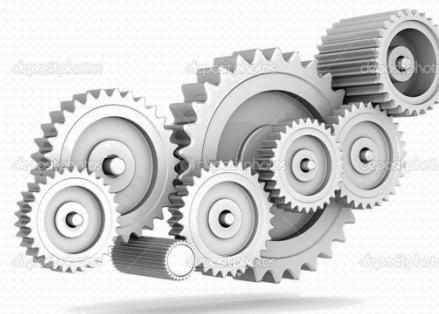
- Alignment, fine tuning, Troubleshooting
- Instrument and Electrical systems integration
- Schematic Capture
- Wiring from wire harnesses to full chassis wiring like cables, panel and chassis wiring.
- Electrical & Electronic components assembly like sensor, motor (servo and stepper), pneumatics parts, switches, L.E.D. and etc
- PC Board Assembly of single and double sided thru-hole printed circuit boards.
- Machine installation, servicing and maintenance
- Rework on product that was assembled or wired incorrectly and make that “worthless” assembly usable again.
- Manufacturing Process re-engineering
- Pre-production run sample for testing.



# *Manpower Outsourcing*

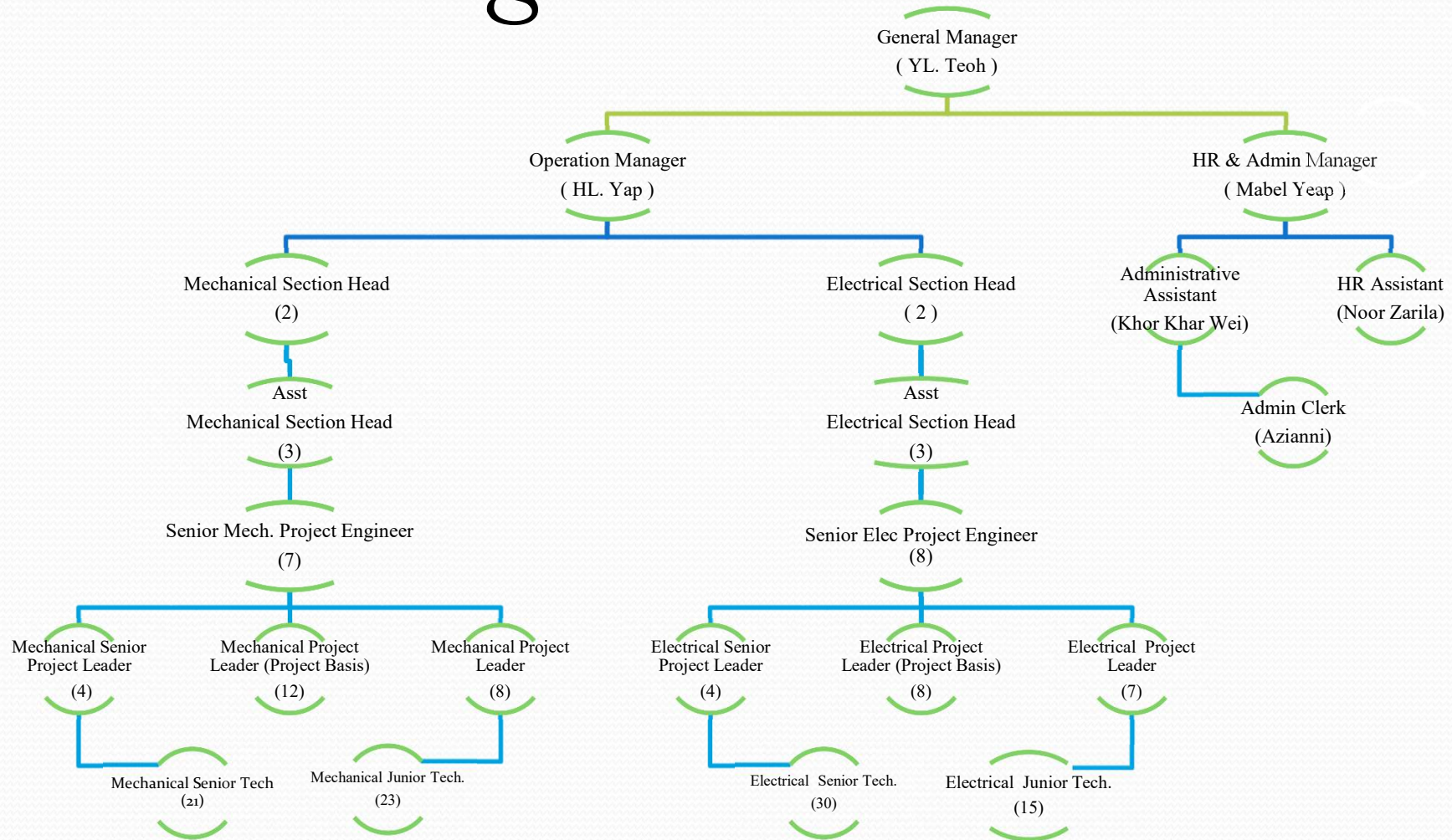
We Provide contract manpower in the following fields:-

- **Assembly Technician**
  1. Electrical
  2. Mechanical
  
- **Assembly Engineer**
  1. Electrical
  2. Mechanical





# Organisation Structure





# Why do companies Outsource

***Here are some common reason:-***

1. Reduce and control operating cost
2. Improve host company focus
3. Gain access to world class capabilities
4. Free internal resource for other purposes
5. A function is time – consuming to manage or it out of control
6. Insufficient resource are available internally
7. Share risk with a partner company
8. Easier to manage sub-con rather than own employees
9. Cash flow improvement

In earlier periods, cost or headcount reduction were the most common reason to Outsourcing. In today's world the drivers are often more strategic, and focus of carrying out core value-adding activities in-house where an organization can be Utilize its own core competencies.





## **How to decide whether to outsource**

- There are no simple criteria to conduct an outsourcing versus in-house analysis. The benefit associated with outsourcing are numerous, and one should consider each project on its individual merits. Ongoing operational costs that may be avoided by outsourcing are also a consideration. In a nut shell, outsourcing allows organization to be more efficient, flexible and effective, while often reducing costs.

### ***Reason for not Outsourcing :-***

- The only reason listed by a significant number of respondents for not Outsourcing a function was the presence of an in-house workforce. None of other choices was list by more than 5% of the respondent.



# Our Production





# *Our Teams*





# *Management Representative Document Control*



**Private & Confidential by  
SE Control Sdn Bhd**



# Contact us

Company Name :	SE Control Sdn Bhd (933364-M)
Nature of Business	Manpower Supply on Automation Machine Installation
Address	No.10, Lorong Perindustrian Bukit Minyak 1/1, Bukit Minyak Industrial Park, 14100 Simpang Ampat, Penang.
Telephone	604-506 0846
Fax No.	604-506 0946
E-mail	<a href="mailto:mabel@secontrol.com.my">mabel@secontrol.com.my</a>
Website	<a href="http://www.secontrol.com.my">www.secontrol.com.my</a>



# Location

A screenshot of a Google Maps interface showing the location of SE CONTROL SDN BHD. The map is centered on an industrial area in Penang, Malaysia. A red location pin is placed on the company's site. A white information box is open over the pin, displaying the company name, address, and a 5.0-star rating. The address is: Industrial Park, 10, Lorong Perindustrian Bukit Minyak 1/1, Kawasan Perindustrian Bukit Minyak, 14100 Simpang Ampat, Penang. The map shows surrounding streets like Jalan Lima and Lorong Asas Jaya, and other nearby businesses such as Hanwa Steel Center and Syarikat Abdul Ghaffar Trading Sdn Bhd. The bottom of the map includes copyright information for 2021 and links for Terms of Use, Privacy & Cookies, and an Edit button.

**SE CONTROL SDN BHD**  
Industrial Park, 10, Lorong Perindustrian Bukit Minyak 1/1, Kawasan Perindustrian Bukit Minyak, 14100 Simpang Ampat, Penang  
5.0 ★★★★★ 1 review  
[View larger map](#)

[Directions](#)

Map data ©2021 Google [Terms of Use](#) [Report a map error](#)

Web Viewer [Terms](#) | [Privacy & Cookies](#) [Edit](#)

Private & Confidential by  
SE Control Sdn Bhd



Private & Confidential by  
SE Control Sdn Bhd



Thank You

for giving us a chance to support

